



BREAKHEART COMMUNITY PROJECT LTD

Working to create a countryside education,
learning, and leisure facility for the community.



History

- Earliest recorded history details from pre 1883.
- The majority of the southern, western and eastern portion of the site are given to Millend Wood.
- 1883-1903: indicates that it was being used as a quarry as on early maps a definitive quarry line and tracks can be seen. Two quarries can also be seen to the eastern portion of the site.
- 1903-1924: indicates that the two quarries to the east are now unused, but a lime kiln has been constructed where the lower quarry and the access road now meet.
- What the Kiln may have looked like



History cont'd

- ▣ 1924-1974: little is known about the workings of the area and the lime kiln, but records of ownership indicate that the quarry changed hands several times, with lease agreements in place to Hills Aggregates, and TF Coke quarry masters, for quarrying of the stone within this period. TF Coke also had an interest in two quarries in Cheltenham where lime kilns were also prevalent, but not commercially profitable.
- ▣ Interesting to note that TF Coke placed a planning consent in 1973 to raise the explosive power charge from 15lbs to 150lbs, to enable the quarry to go deeper. The Dursley members asked for the matter to be referred to the county committee, but in this period the local committee ruled that any number of charges of 15lbs could be used up to 150lbs.
- ▣ Also records show that since 1967 the CEEGB had leased the area for the hydraulic testing of steel vessels in connection with faulty work on the design of boilers for power stations.
- ▣ The CEEGB obtained a lease for the quarry somewhere in the late 50s, and bought it in 1986 from owners Mrs EM Black and Mrs JM Robertson, for £11,000 for the purpose of using it as a destructive test centre for its new nuclear industry.

History cont'd.

- ▣ 1958-1959: the CEGB used stone from the lower quarry to reclaim land from the river Severn to build Berkeley Power station, with spoil being returned to the lower quarry.
- ▣ 1975: used stone for base structure for new M5 motorway.
- ▣ 1967-2000: it was used by the CEGB for the pressure testing of various non-radioactive apparatus for use within the industry.



History cont'd

- ▣ 2000-2008: the quarry was left in a state of suspension. With the shutdown and decommissioning of nuclear stations taking place, the destructive testing was not needed and the nuclear assets were divested.
- ▣ 2008-present day: In 2009, the lease of the quarry was obtained by a dedicated group of locals, who set up Breakheart Community Project Ltd to manage the area from the government body the N,D,A, Nuclear Decommissioning Authority," as the sole objective to keep the natural beauty of the landscape restore the area to its former natural glory and to allow the local community access as a place of learning, education, and leisure.
- ▣ Breakheart Community Project Ltd, are in the process of restoring the area to its former natural glory, with access to all areas, and maintaining the area in line with its ancient woodland status, in line with guidance from the Forestry commission of England, and a 5 year woodland management scheme. This has now been extended for a further 5 years 2019.

Area statistics: Environmental

- ▣ Strata: limestone
- ▣ Upper: inferior oolite 15 m depth
- ▣ Lower: inferior oolite 30 m depth
- ▣ Cotswold sands 45 m depth
- ▣ There is an East to West fault (fissure), depth unrecorded, on the north of the site, and a second North to South fault on the northern boundary.
- ▣ The lowest height above sea level is 176m, rising to a maximum height above sea level of 190m.

Diversity

- ▣ The whole of Millend Wood is classified as Semi Ancient Woodlands, with a segregation of tree species within its boundaries. On the western slopes is predominantly aged, coppiced Beech, on the southern slopes, a mixture of English cherry, ash and imported larch. These were planted during WW2 when large amounts of wood for building and infrastructure were required.

Diversity

- ▣ Eastern slopes are mainly of ash with a small contingent of hazel and oak.
- ▣ During the previous management years areas of larch have been felled and hazel planted to create a lower over-storey for dormice and small nesting birds.
- ▣ During the CEGB / Magnox ownership the area was managed at a cost of £10,000 pa by GWT, with studies and work program management plans, for five year cycles

Present state

- ▣ The quarry was put up for commercial sale in 2009, but after discussions with local people it was decided to withdraw it from the open market.
- ▣ It was then that expressions of interest were invited by interested parties.
- ▣ GWT, Vale Vision, and Ray Pekala, expressed interest in running the area for and on behalf of the local community, and table discussions took place.

Present state

- ▣ GWT then decided to withdraw from the discussions and it was left to Vale Vision and Ray Pekala to work together to secure the future of this area.
- ▣ A business plan was formulated and put to the Nuclear Decommissioning Authority (the owners) and was accepted, and Breakheart Community Project were granted a quiet enjoyment lease of 99 years.

Present state

- ❑ Breakheart Community Project Ltd was formed in 2009, by founder members, Ray Pekala, Chris Cherry, Geoff Wheeler and Shirley Hill, and had a directorship of seven including, Marjory Wright Rob Boulton, and Steve Chappell.
- ❑ With the resignation of Chris Cherry, Shirley Hill, Geoff Wheeler, Marjory Wright and Rob Boulton. We now have a dedicated team of four directors, with the inclusion of Jon Poltock, Martin Stevens Lee, and our secretary Sabina Maw. Also a non executive volunteer Marion.
- ❑ We have a dedicated team of lady volunteers which organise and run various fund raising activities on which we are reliant for our income
- ❑ A variety of skills are now present which complement the nature of work that requires to be done, from marketing to land management, from environmental to business and beyond.

Present state

- ▣ 2013 was a milestone in the short history of Breakheart as we were granted charitable status, and accepted into the environmental body of ENTRUST. ENTRUST is the regulator of the Landfill Communities Fund (LCF), an innovative tax credit scheme which enables Landfill Operators (LOs) to contribute money to enrolled Environmental Bodies (EBs) to carry out projects that meet environmental objects contained in The Landfill Tax Regulations 1996 (Regulations).

What we have to offer

- ▣ A state of the art class room, with overhead digital projector, and laptops are available for use. With wireless internet and web access, with printing and secure data storage.
- ▣ The main workshop area is now fully refurbished, with plastered walls, false ceiling wooden flooring and sound system, and is available to hire for parties and functions
- ▣ We need volunteers, to move forward into the future to maintain our commitment to our landlords and the community.

Who uses our facilities

- ▣ Our present hire users are primarily school parties who enjoy the outdoors, with adult learning and disabled parties being organized by local group World Jungle, and Connect AT.
- ▣ The Army cadets are currently using the facilities for drilling on a Monday night.
- ▣ The main hall is utilised for birthday parties and family events along with a local band who use it for practice on a Wednesday night.

What we have to offer

- ▣ The large indoor area is currently being used as a fitness area by a local fitness instructor for Pilates and Exercise.
- ▣ To complement this, a kitchen with hot and cold water, microwave, crockery and cutlery.
- ▣ New Toilet's have been constructed and completed in April 2014, with a fantastic grant from, **The Gloucestershire Environmental Trust**, and **The Summerfield Trust**, without whose help could not have been possible, this now opens the site for further activities.

New Toilet Facilities

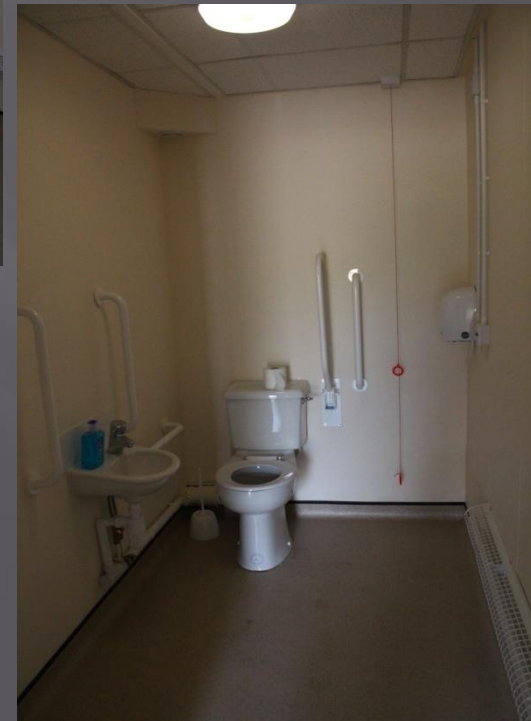
Gents



Disabled
and baby
change



Ladies



What we have to offer

With the landscape lending itself to outdoor activities BCPL is encouraging the use of the area for organised events such as:-

- ▣ Mountain biking,
- ▣ M/C Trials,
- ▣ Extreme running,
- ▣ Archery,
- ▣ Photography,
- ▣ Fitness programmes
- ▣ Children's natural play area.



Childrens natural play area



What we make Carvings



What we make Benches and picnic tables



Finance

- ▣ The project has financial commitments to raise £3,500 annually, to cover the insurances, overheads and running costs.
- ▣ This is proving hard and with tools and machinery in constant need of replacement and repair we are always looking for funding, however small.

Finance

- ▣ A small Bric a Brac area has been set up by Martin one of our directors for recycling utensils that would otherwise be sent to landfill this is proving very popular with walkers and visitors to site and is bringing in a small but very use full sum on a monthly basis.



Commitment

- ▣ Breakheart has developed considerably during its short life and, without the dedication of its directors to preserve its ethos, would not be the place it is now.
- ▣ A commitment by all involved with the project and with help from the community will see Breakheart grow and develop into not only an area of outstanding natural beauty but an area for all to enjoy for many years to come.

www.breakheart.org.uk

Classroom



Magnox Volunteers



Site

Visitors Centre



Visitors centre
under
construction



Visitors center

- ▣ We now have a log cabin and seating area doubling as a visitor centre and refreshment area serving vended hot drinks Tea/Coffee/Cocoa, with a vended snack machine dispensing cold canned drinks, chocolate, ice cream in the summer months, and sometimes locally made scrumptious cakes, this area is also equipped with a log fire for those cold winter walks, with an information centre of what's on in the local area.
- ▣ The visitor centre which is now fully operational is self funding paying for its initial set up in 6 months and now supports itself.

Visitor Centre

- ▣ We are open from 10:00 till late on Fridays Saturdays and Sundays, and bank holidays, school holliday's, where you will find a jovial bunch of regulars sitting in an area of outstanding natural beauty on locally made timber benches and tables drinking tea.
- ▣ When after being refreshed you can take in the woodland walks and glorious views from the escarpment towards the two Severn bridges, Chepstow, and Tyndale's monument.

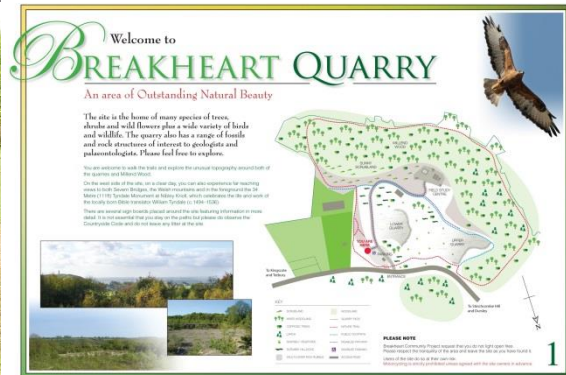
Seating area All made at Breakheart



Activities

- ▣ Walks within the grounds are being planned, and way marked, with routes graded in severity to cater for all abilities.
- ▣ We also have a long mountain bike course which winds itself down into the woods, and climbs back up to finish at the café for you to recuperate length of approximately, 2 mile. (Not for the faint hearted)
- ▣ A children's active natural play area with climbing nets, see-saw, and swings is in the process of construction with new activities being added all the time.

Pictures



Pictures



Indicative Hire costs

- ▣ Main hall :-- £40.00 per 4 hour period to include kitchen and toilets (schools exempt)
- ▣ Magnox suite:-- £40.00 per 4 hour period to include kitchen and toilets(schools exempt)
- ▣ Barbeque:-- £5.00 per hire
- ▣ External space:-- £0.00 free to all
- ▣ External space and buildings on a corporate hire £ negotiable.
- ▣ All of the hires are inclusive of the visitor centre which remains open for general community use.